

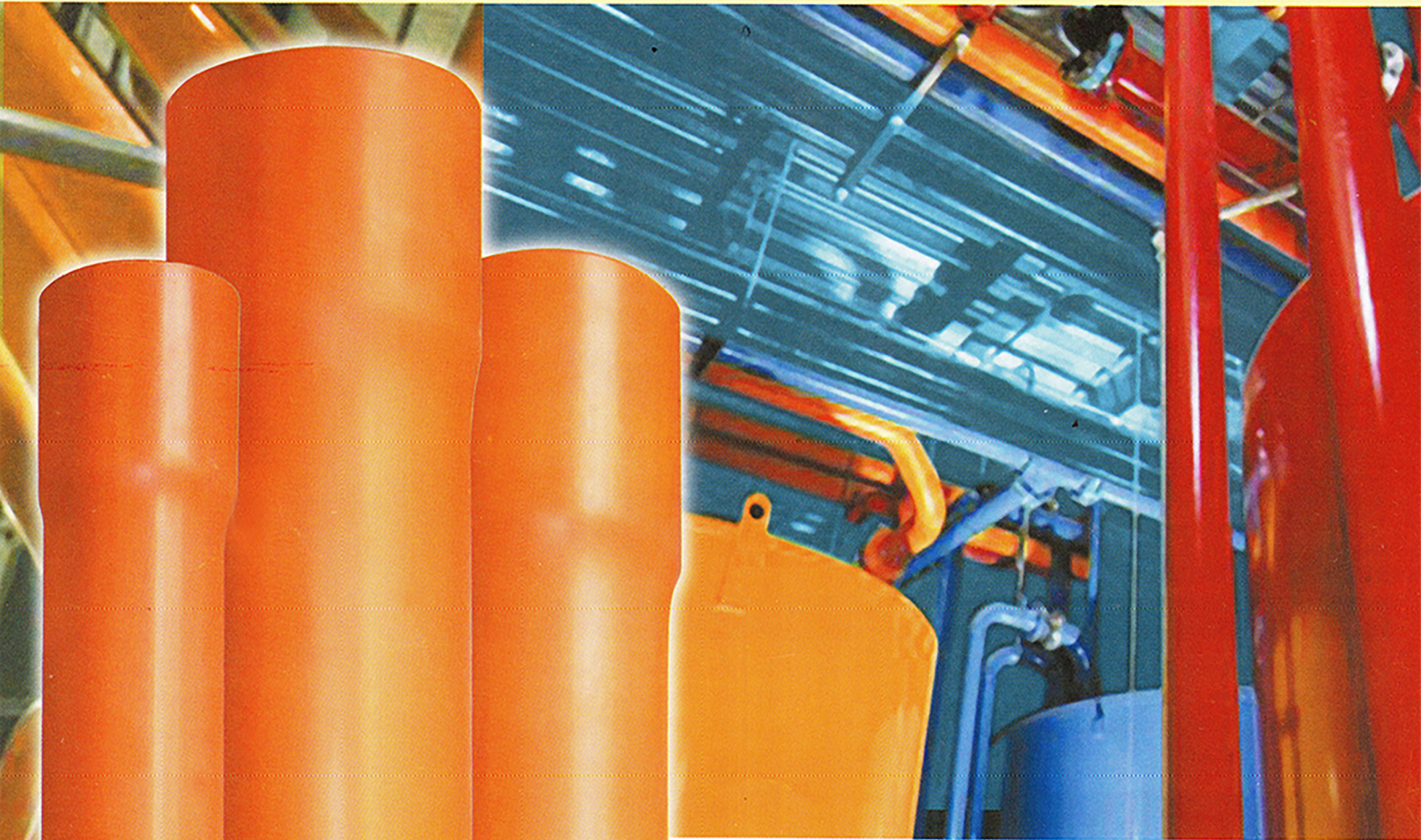


EMERALD

One name, One standard of Excellence.

GUARANTEED

HIGH IMPACT PVC PIPES & FITTINGS



For Drains, Wastes and Vents

DISTRIBUTED BY:

LB JONSON

COMMERCIAL & DISTRIBUTION, INC.

Door 9 & 10, RGBirrey Architectural Bldg., Domsat Rd., San Rafael Village,
Brgy 9-A Poblacion, Davao City 8000

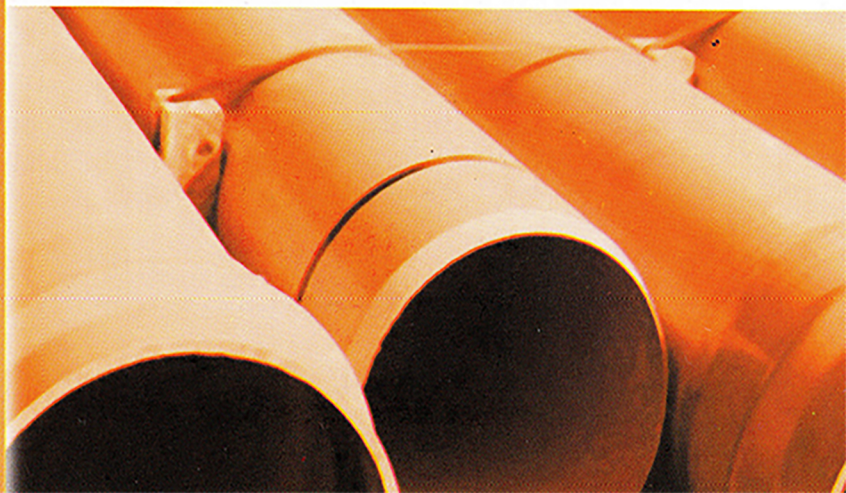
☎ (082) 224-4500 / (082) 222-3122

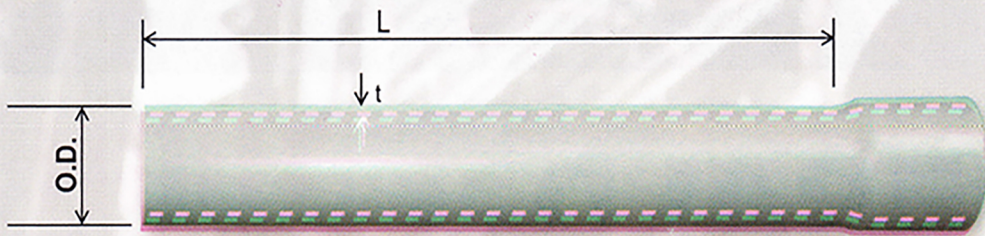
(082) 326-0012

☎ 0925-355-4500 / 0917-513-8585 / 0917-519-8585

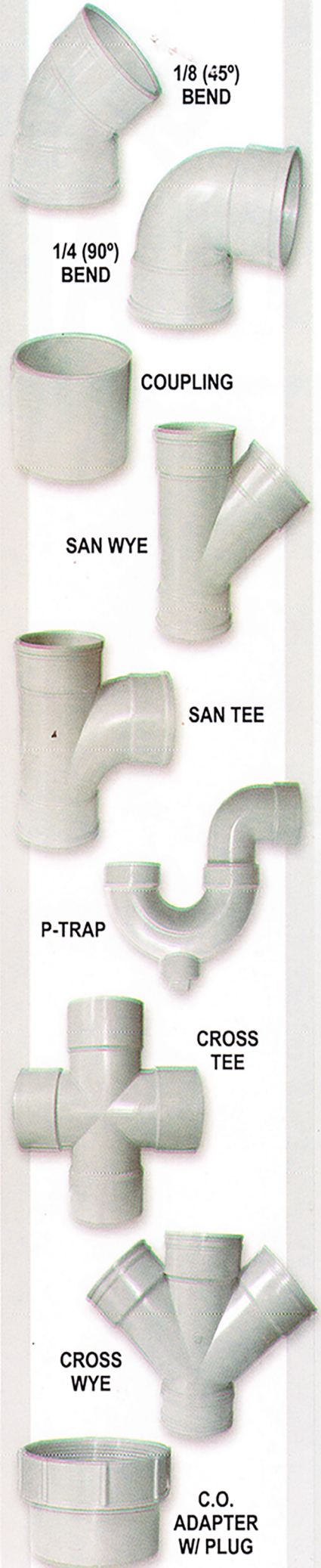
✉ lbjonsoncdi@gmail.com

📍 LB JONSON COMMERCIAL & DISTRIBUTION, INC.





FITTINGS



PIPES

NOMINAL SIZE		O.D. mm	WALL THICKNESS ^t		L LENGTH mm
mm	inch		SERIES 600 (mm)	SERIES 1000 (mm)	
63	2	57.15	1.78	2.44	3000
90	3	82.55	2.44	3.65	3000
110	4	107.06	2.44	3.71	3000
160	6	160		4.70	3000

ADVANTAGE OF EMERALD SERIES PVC FOR DRAIN, WASTE AND VENTS

CORROSION-PROOF	It is resistant to corrosion by water and soil chemicals, including hydrogen sulfide in sewage. Also, it prevents formation of scales and slimes in the pipe wall.
HIGH CHEMICAL RESISTANCE	It is not affected by chemicals or aggressive liquids such as acids, alkalis or other organic chemicals.
LIGHTWEIGHT	As it is only about 1/5 the weight of steel pipes, installation virtually becomes easier and faster, aside from being much less expensive.
LOW HYDRAULIC RESISTANCE	Having a glass smooth interior wall and Manning Coefficient flow value of 0.009, friction loss is significantly reduced.

USES / APPLICATION

- Footing drains (foundation drains)
- Downspout / Storm drainage
- Building sewers and underground building drains
- House connections to septic tanks
- Industrial wastes disposal
- Leaching system piping for septic tank effluents

JOINTING METHOD

PVC pipes and fitting are joined by solvent cement. For perfectly effective results, use Emerald PVC Solvent Cement, available in 100 cc, 200 cc, 400 cc and 1 gal.

OUR GUARANTEE

EMERALD Series PVC for Drain, Waste and Vent are manufactured through the most modern production technology and strict quality control procedure. Hence, it delivers superior product performance that assures trouble-free lifetime service.

Moreover, EMERALD supports customers by way of technical assistance and information on design, actual demonstration and such other traditional post sale service.

All EMERALD piping materials have the renowned EMERALD guarantee of reliability and superior quality.

INTERNATIONAL STANDARD REFERENCE
ASTM as per Designation D-2729
ISO 4435

PHILIPPINE STANDARD REFERENCE
Bureau of Product Standards PNS/SAO 374
Department of Trade and Industry



 **EMERALD VINYL CORPORATION**

Distributed By:
LB JONSON
COMMERCIAL & DISTRIBUTION, INC.